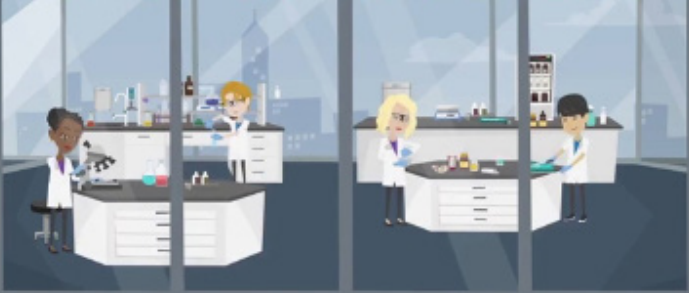


CITY OF SCIENCE



h_da:

English-taught classes in Mechanical and Plastics Engineering

Adaptive Control, Modeling and Identification, 5 CP
Computer Vision, 5 CP
Eco-Design & Life Cycle Assessment, 5 CP*
Failure Analysis, 5 CP *
Fracture Mechanics, 5 CP*
Safety in Industrial Automation - lecture, 5 CP
Safety in Industrial Automation - lab, 2.5 CP
Technical English for Mechanical Engineering, 2.5 CP
Technical English for Mechatronics, 2.5 CP
Technical English for Plastics Engineering, 2.5 CP
Individual research projects, up to 10 CP

* available in spring semesters only, **not** available in winter semesters

For more information, please contact Professor
Britta Pyttel: brita.pyttel@h-da.de.